



High Speed Internet Service User Guide

Contents:

1. General Information
2. Installation & Configuration
 - Nokia Card Phone, Nokia 6210 mobile phone, other mobile terminal etc.
 - WebOnAir (WOA) Proxy Client
3. Access & Operation of Azercell High Speed Internet service
4. List of abbreviations

1. General Information

Azercell High Speed Internet Service is based on WISE™ - Wireless Internet Solutions package, product of Ericsson, which integrates a number of products and features to provide connection from GSM network to Internet and to maximize the throughput of data.

The WISE™ solution consists of four parts:

- **HSCSD (High Speed Circuit Switched Data)**
- **HDLC connection**
- **Integrated Access Server(IAS)**
- **WebOnAir™ (WOA) Filter Proxy**

HSCSD technology enables transferring your data through multiple time-slots simultaneously and thus gives increase in speed up to 3 times.

HDLC technology increases the effective data rate by 25%. This service enables the mobile terminal to establish a data connection up to 38.4 kbps speed.

IAS technology allows to connect directly to the Internet without going via public PSTN, call set-up times are reduced from up to 40 seconds to less than 10 seconds.

WebOnAir™ Filter Proxy substantially reduces the amount of data transmitted by compressing and optimizing Web pages...

WOA Filter Proxy is a client/gateway solution to speed up the World Wide Web (WWW) access via slow communication lines such as from a laptop or handheld PC connected via a modem to a mobile phone. With WOA Filter Proxy you can reduce the time it takes to download a web page by an average factor of three. For typical on-line newspaper pages, using WOA over a wireless connection (GSM, D-AMPS, etc.) will give you up to five times faster download.

Note: The reduced download time varies a lot between different types of web pages, as well as depends on CPU of computer used.

For some web pages the gain can be close to nothing, while for others it can be a gain of 10 times faster or even more.

2. Installation & Configuration

I. To install Nokia PhoneCard, Nokia 6210 mobile phone or any other terminal supported in your operator's network, please carefully follow the manufacturer instructions for appropriate device.

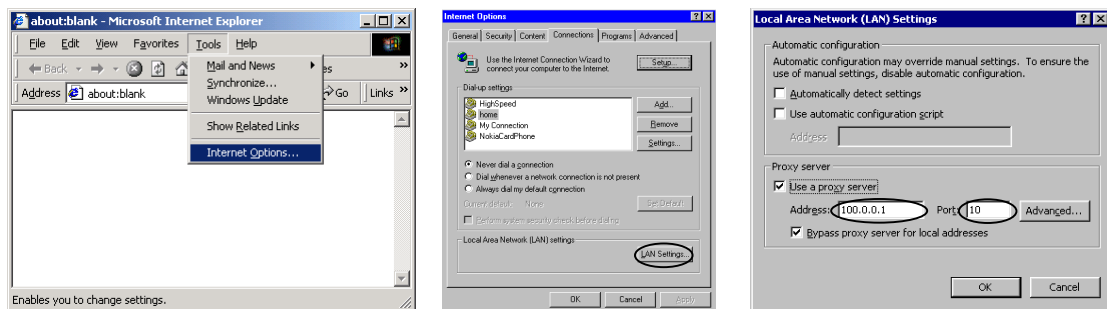
II. After installing the mobile terminal, it is advised to install WOA client on customer's PC.

Please follow instructions below to install WOA client.

1. If you are currently using any other Proxy Server, please enter your Internet Explorer settings menu and note down current settings, as they might be needed if you decide to restore your initial settings. In this case you will also have to note WOA proxy settings to be able to come back to using WOA – it is:

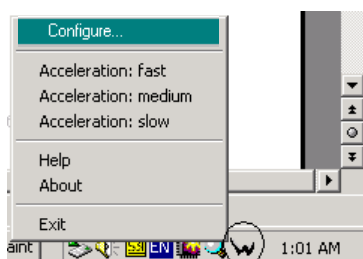
Address – 127.0.0.1 Port - 8181

For example, with MS IE5.0:



2. Open the *WebOnAir.exe* file and install it on your computer following instructions.

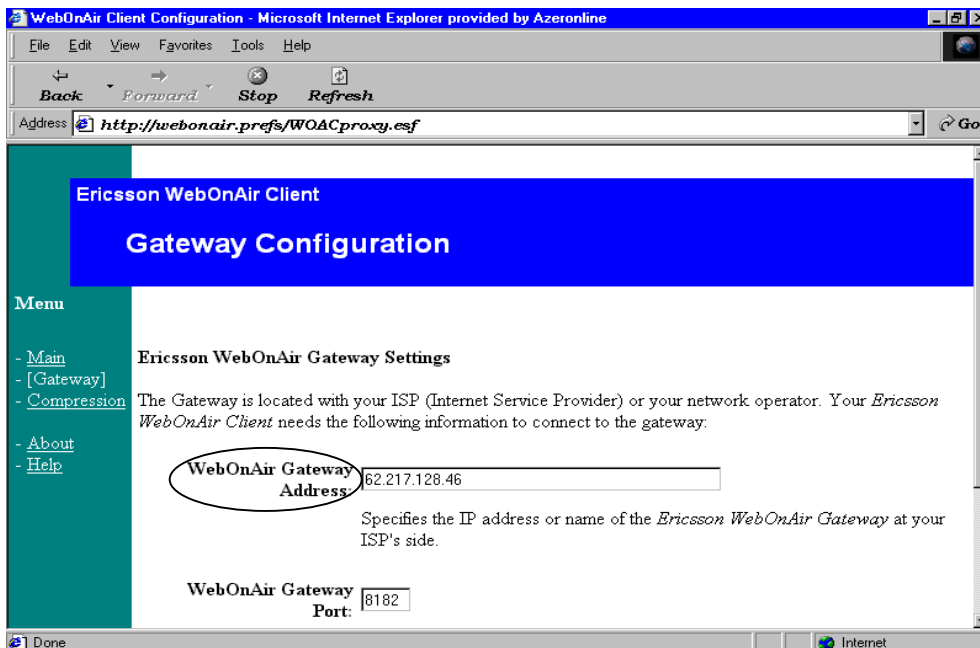
3. Right-click on WOA icon placed at Taskbar and enter Configuration menu.



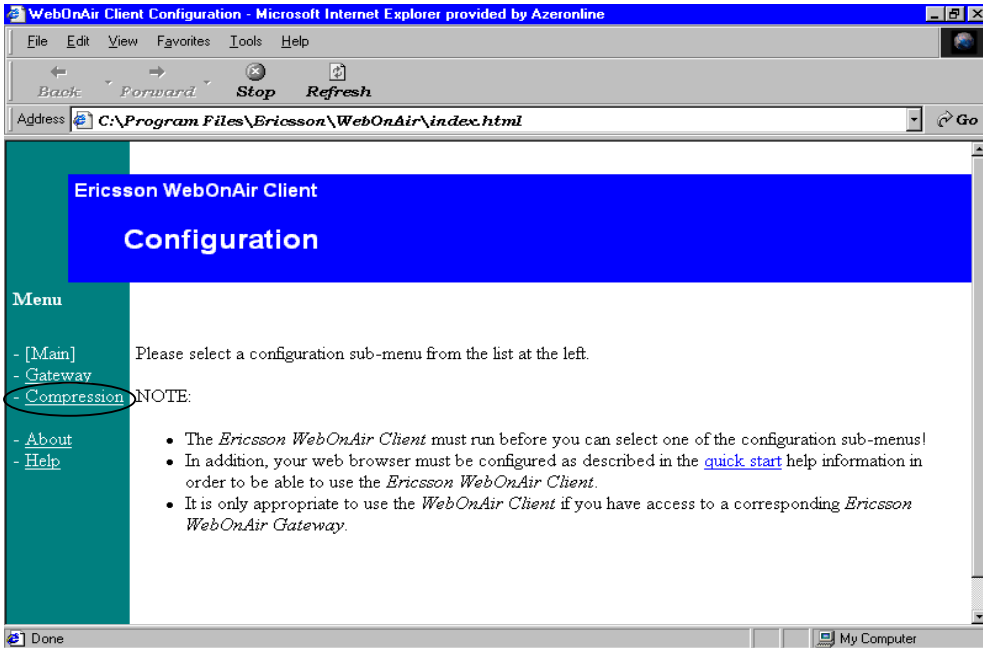
5. Select *Gateway* menu



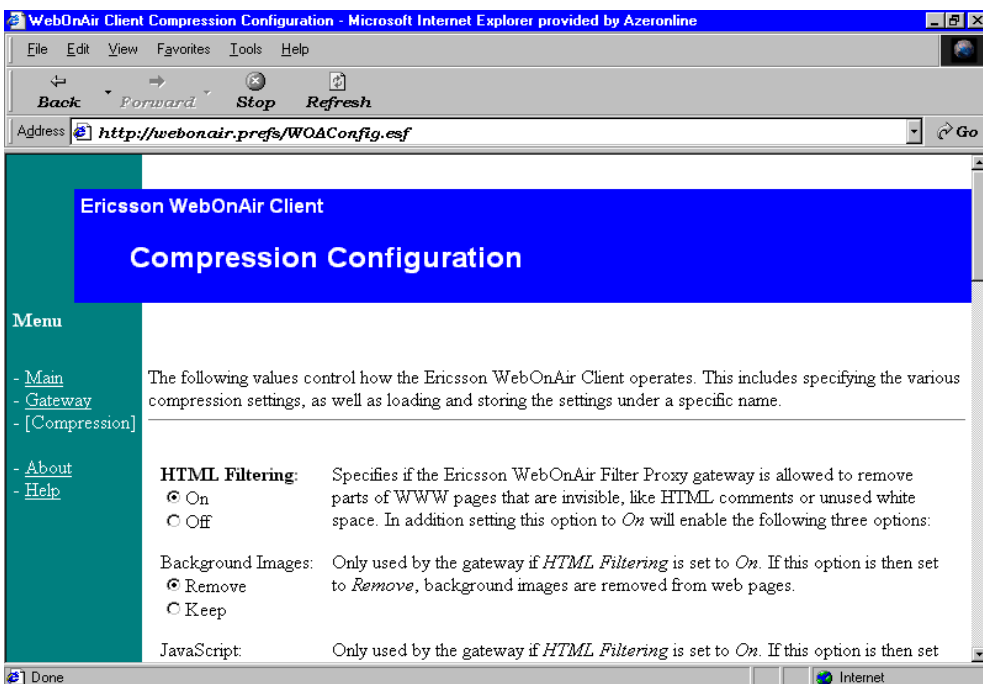
5. Enter the WOA Gateway address, *62.217.128.46*, into the field “WebOnAir Gateway Address:” and press *Apply*.



6. Select *Compression* menu.



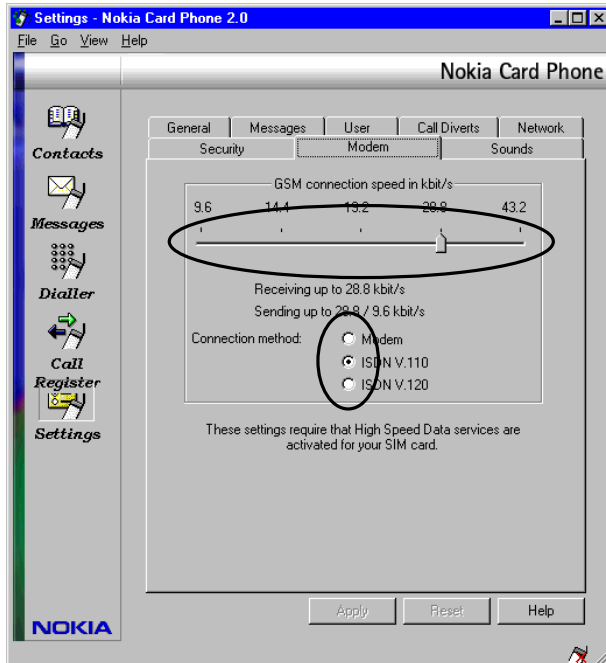
7. Rest of settings for WOA client can be adjusted according to customer preferences.



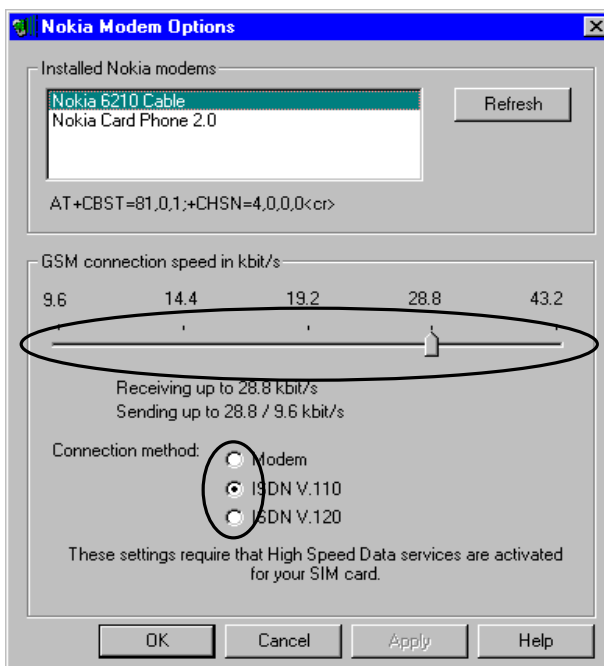
3. Access & Operation of Azercell HSI service

1. First select baud rate and connection type for appropriate device using manufacturer specified application menus. For HDLC encapsulation, please select *ISDN V.110* in *Connection method* submenu.

For Nokia Card Phone use following menu



For Nokia 6210 mobile phone select *Nokia Modem Options* from *Control Panel* of Windows



2. From *Dial-up Networking* of Windows select *Make New Connection* and fill in appropriate data.
3. If you are going to connect with standard *Modem* connection method at 28.8 kbps, please enter **7575222** into *Phone number* field.
4. If you are going to connect with *ISDN V.110* connection method at 38.4 kbps, please enter **75767575222** into *Phone number* field.
5. Enter **webuser** and **web2000** into *User name* and *Password* fields accordingly.
6. If WOA client not currently running, start it from *Start* button submenus, adjust parameters up to customer preference (refer to *Configuration & Help* submenus from Taskbar icon)
7. Double-click on dial-up connection icon and establish HSI connection.
8. If you don't want to use WOA filtering but require caching, please double-click on WOA icon on Taskbar to deactivate it.
9. If you want to completely by-pass WOA service including Server Web Caching, double-click on WOA icon on Taskbar and exit WOA application.
10. To uninstall WOA application from your PC, use only the *Add/Remove Programs* submenu from Windows *Control Panel* menu.

4. Abbreviations

HSCSD	High Speed Circuit Switched Data
HDLC	High Level Data Link Control
HSI	High Speed Internet
IAS	Integrated Access Server
IP	Internet Protocol
ISDN	Integrated Services Digital Network
ISP	Internet Service Provider
GSM	Global System for Mobile communications
PSTN	Public Switched Telephony Network
TCP	Transfer Control Protocol
WISE™	Wireless Internet Solution from Ericsson